

## Ex-signal and escape sign luminaire

dKLK 23 LED / dKLK 23 LED V-CG-S

Plastic design for Zone 1 and 21

### Securing and signalling

These light fittings meet the requirements of ATEX-Directive 2014/34/EU for temperature class T6. They are certified for use in hazardous areas in Zones 1 and 2 with a temperature class up to T6, as well as for explosive dust atmospheres in Zones 21 and 22. What is more, they also meet the requirements in accordance with EN 60598, Part 2.22 for emergency lighting.

If a flash module is fitted in the housing (optional), the light fitting can be used also as a strobe light.

The dKLK 23 LED version is supplied with an LED lamp. This combines the innovative LED technology with main features, such as:

- Energy saving
- Environmentally friendly because mercury free
- Long service life
- Cost-saving due to long maintenance intervals
- Ideally suited for intermittent operation as flashing light

The housing is made of a fibre-glass reinforced polyester and the protective globe of a transparent or coloured polycarbonate.

When fitted with coloured protective cover, they are also used as signal lights.

The luminaire is connected using a flameproof eXLink coupler plug or via a flameproof cable gland.

With the optional V-CG-S monitoring module with coding switch for max. 20 addresses, they can be connected as individually monitored emergency lighting luminaires to the CEAG emergency lighting supply system (dKLK 23 V-CG-S).



### Features

- Signal light fitting, also with coloured protective globe, for use in environments in temperature class T6
- For use with LED lamp
- For ceiling and wall mounting
- High degree of protection IP66
- Connection to the CEAG emergency lighting supply systems with individual monitoring possible
- Optional flash module

### Ordering details

Type	Scope of delivery	Colour of protective cover	Order No.
dKLK 23 V-CG-S /eXLink <sup>1)</sup>	1 x eXLink Coupler 2-pol. + PE for cable Ø 7,5 - 11 mm, for V-CG-S-Module and code switch	clear	<b>GHG 871 2001 R0001</b>
dKLK 23 V-CG-S /Ex d <sup>1)</sup>	for V-CG-S-Module and code switch + 1 x Ex-d cable gland M20 x 1,5 für Ø 7 - 12 mm	clear	<b>GHG 871 2001 R0101</b>
dKLK 23 LED/eXLink	1 x eXLink Coupler 2-pol. + PE for cable Ø 7,5 - 11 mm	clear	<b>GHG 871 4021 R0001</b>
dKLK 23 LED/eXLink	1 x eXLink Coupler 2-pol. + PE for cable Ø 7,5 - 11 mm	red	<b>GHG 871 4121 R0001</b>
dKLK 23 LED/eXLink	1 x eXLink Coupler 2-pol. + PE for cable Ø 7,5 - 11 mm	green	<b>GHG 871 4221 R0001</b>
dKLK 23 LED/eXLink	1 x eXLink Coupler 2-pol. + PE for cable Ø 7,5 - 11 mm	blue	<b>GHG 871 4321 R0001</b>
dKLK 23 LED/Ex d	1 x Ex-d cable gland M20 x 1,5 für Ø 7 - 12 mm	clear	<b>GHG 871 4021 R0101</b>
dKLK 23 LED/Ex d	1 x Ex-d cable gland M20 x 1,5 für Ø 7 - 12 mm	red	<b>GHG 871 4121 R0101</b>
dKLK 23 LED/Ex d	1 x Ex-d cable gland M20 x 1,5 für Ø 7 - 12 mm	green	<b>GHG 871 4221 R0101</b>
dKLK 23 LED/Ex d	1 x Ex-d cable gland M20 x 1,5 für Ø 7 - 12 mm	blue	<b>GHG 871 4321 R0101</b>



1) For connection to CEAG emergency supply systems, with address switch for 20 addresses.

A wide selection of cable glands can be found at [www.crouse-hinds.de/products](http://www.crouse-hinds.de/products) or in the catalogue Part 2, Section 3

### Accessories

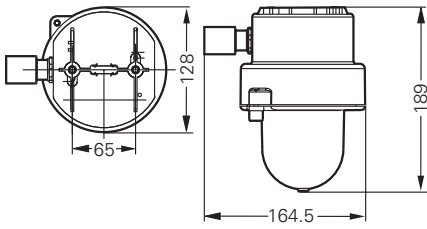
Type	Order No.
Flash module Eurolite E27 Strobe	<b>GHG 870 1912 R0001</b>
Master glow LED bulb E27 6W	<b>GHG 870 9304 P0004</b>
LLED 8G 6027 LmKW 8W SPP1	<b>GHG 870 1914 R0005</b>



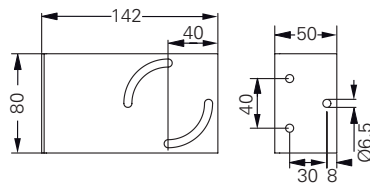
# Dimension drawing / Polar curve

dKLK 23 LED / dKLK 23 LED V-CG-S

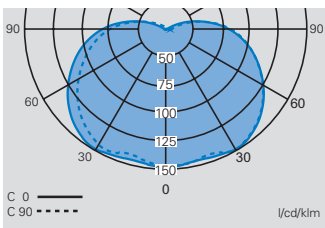
## dKLK 23



## Mounting bracket

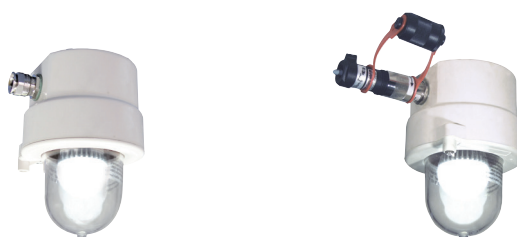


## Polar curve dKLK 23 LED



# Technical data

## dKLK 23 LED / dKLK 23 LED V-CG-S



### Technical data

	dKLK 23 LED	dKLK 23 LED V-CG-S
EC-Type Examination Certificate	BVS 10 ATEX E 003	BVS 10 ATEX E 003
IECEX Certificate of Conformity	IECEX BVS 10.0003	IECEX BVS 10.0003
Marking accd. to 2014/34/EU	⊕ II 2G Ex d IIC T6 Gb ⊕ II 2D Ex tb IIIC T80°C Db IP66	⊕ II 2G Ex d IIC T6 Gb ⊕ II 2D Ex tb IIIC T80°C Db IP66
Marking accd. to IECEx	Ex d IIC T6 Gb Ex tb IIIC T80°C Db	Ex d IIC T6 Gb Ex tb IIIC T80°C Db
Permissible ambient temperature	-20 °C up to +40 °C	-20 °C bis +45 °C (depending on lamp power and position of use)
Rated voltage	230 V AC	220-240 V AC / 195-240 V DC
Rated current	ca. 37 mA / ca. 76 mA	ca. 76 mA
Frequency	50 - 60 Hz (AC)	DC und 50 - 60 Hz (AC)
Power factor cos φ	1	1
Protection class	Master glow LED bulb E27 6W (470 lm) LLED 8G 6027 LmKW 8W SPP1 (640 lm)	LLED 8G 6027 LmKW 8W SPP1 (640 lm)
Lamp / Illuminant	290 lm / 640 lm <sup>1)</sup>	640 lm <sup>1)</sup>
Rated luminous flux	E27 according IEC 60238	E27 according IEC 60238
Lamp cap	164.5 x 189 x 128 mm	164.5 x 189 x 128 mm
Dimensions (L x W x H)	Flameproof inlet eXLink, 3-pole, 2 + PE, cage clamp terminal for cable Ø 8-11 mm max. 1.5 mm <sup>2</sup> or flameproof cable gland M20 x 1.5 for cable Ø 7 - 12 mm, terminal L, N, PE max. 2.5 mm <sup>2</sup> clamp terminal	Flameproof inlet eXLink, 3-pole, 2 + PE, cage clamp terminal for cable Ø 8-11 mm max. 1.5 mm <sup>2</sup> or flameproof cable gland M20 x 1.5 for cable Ø 7 - 12 mm, terminal L, N, PE max. 2.5 mm <sup>2</sup> clamp terminal
Enclosure colour	RAL 1013	RAL 1013
Enclosure material	Glass fibre reinforced polyester	Glass fibre reinforced polyester
Weight	1.7 kg	1.7 kg
Degree of protection accd. to EN 60529	IP66	IP66
Protective cover / protective bowl	Polycarbonate	Polycarbonate

<sup>1)</sup> Light colour 6000 K (8 W, 3000 K, 470 lm on request)