

# SALUKA-N-LED

IP 66/  ZONE 2/22



FTZÚ 17 ATEX 0027X



**Application:** Dustproof lighting fixture SALUKA-N-LED with splash water resistance designed for lighting of areas with danger of explosion. The lighting fixture is certified by FTZU Ostrava-Radvanice (certificate type FTZU 17 ATEX 0027X).

**Ballast:** EP – electronic 220-240V/50-60Hz, 220-240V, 0 Hz DC

**Light source:** LED, 4000K, CRI +80, MacAdam3

**Housing:** White painted steel sheet RAL 9016

**Diffuser:** Opal tempered safety glass

**Reflector:** White painted steel sheet RAL 9016

**Fastening:** Direct surface wall or ceiling mounting, ceiling mounting by means of ceiling brackets or adjustable brackets, wall mounting by means of wall arm brackets, pole mounting by means of pole brackets, suspension via set of suspension hooks (standard equipment)

**Connection:** Screwless three-pole terminal block, maximum diameter of wires 2.5 mm<sup>2</sup>

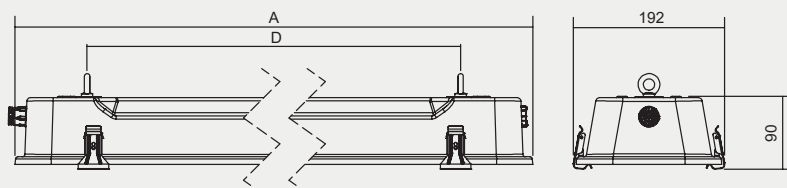
**Standard equipment:** 1 pc M20 cable gland for diameter of cable 7-12 mm, 1 pc M20 sealing plug, 2 pcs suspending hook, 2 pcs rubber gasket

**Calculated lifetime – LED modules:** L80B10 ta40 – 70 000h, L70B10 ta40 – 100 000h

**SALUKA-N-LED, MULTISALUKA-N-LED, SALUKA-N-LED-Em**

Ⓜ II 3G Ex nR IIC T6 Gc

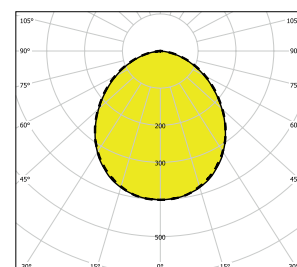
Ⓜ II 3D Ex tc IIIC T80°C Dc



Order number	Name	Lighting fixture luminous flux (lm)	Power input (W)	Rated power output (lm/W)	Ta max (°C)	Dimensions of lighting fixture A x B x C (mm)	Mounting spacing D (mm)	Weight (kg)
080000	SALUKA-N-LED-OP-1250-218-G2-4K	1155	8	145	45	705x192x90	510	3,8
080001	SALUKA-N-LED-OP-2500-218-G2-4K	2220	15	148	60	705x192x90	510	3,8
080002	SALUKA-N-LED-OP-5000-218-G2-4K	4409	29	153	55	705x192x90	510	3,9
080003	SALUKA-N-LED-OP-2500-236-G2-4K	2220	15	148	60	1305x192x90	1110	7,1
080004	SALUKA-N-LED-OP-5000-236-G2-4K	4440	29	154	60	1305x192x90	1110	7,1
080005	SALUKA-N-LED-OP-10000-236-G2-4K	8819	58	153	50	1305x192x90	1110	7,2
080006	SALUKA-N-LED-OP-3750-258-G2-4K	3330	22	152	55	1605x192x90	1410	8,1
080007	SALUKA-N-LED-OP-7500-258-G2-4K	6661	44	152	55	1605x192x90	1410	8,1
080008	SALUKA-N-LED-OP-12550-258-G2-4K	11305	74	153	45	1605x192x90	1410	8,3
080009	SALUKA-N-LED-OP-16700-258-G2-4K	14175	95	150	50	1605x192x90	1410	8,5
080010	SALUKA-N-LED-OP-20000-258-G2-4K	16963	117	145	45	1605x192x90	1410	8,5

Tolerance of luminous flux and power input of the lighting fixture +/- 10%

SALUKA-N-LED

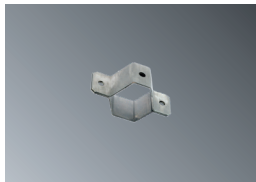


— C0-C180      - - - - C90-C270

## Accessories on request



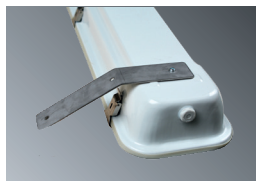
051139 Set of ceiling brackets SALUKA (2 pcs)



051145 Pole bracket SALUKA stainless steel (for Ø 50 mm)  
 051146 Pole bracket PITBUL/SALUKA (pro Ø 50 mm)  
 064018 Pole bracket SALUKA stainless steel (for Ø 40 mm)



063754 Set of adjustable brackets SALUKA (2 ks)



051147 Stainless steel wall arm bracket SALUKA 60° (1 pc)

### Standard accessories M20

007047N	Flat sealing ring EPDM 27x18.5x1.5 mm
008060	Cable gland Ex M20x1.5
008097	Plastic nut WISKA EMUG 20 M20x1.5
008090	Sealing plug Ex M20x1.5

### Accessories for armoured cable M20

008052	Cable gland BIMED M20x1.5 ORION UNIVERSAL (8+/- 0.5Nm)
008091	Sealing plug WISKA EMVS20 M20x1.5 Ex-nickel-plated brass
008093	Nut WISKA EMMU20 M20x1.5 - nickel-plated brass
007047N	Flat sealing ring EPDM 27x18.5x1.5 mm

### Nickel-plated accessories M20

008092	Cable gland WISKA EMSKE20 M20x1.5 Ex-nickel-plated brass ( 8 Nm)
008093	Nut WISKA EMMU20 M20x1.5 - nickel-plated brass
008091	Sealing plug WISKA EMVS20 M20x1.5 Ex-nickel-plated brass
007047N	Flat sealing ring EPDM 27x18.5x1.5 mm

## Lighting fixture detail



## On request

**DIM** – dimmable electronic ballast (DALI,DSI, 1-10V)

**GESIS** – possibility to equip lighting fixtures with connectors

**MULTI-1/3** - maintained emergency lighting is always on (standard luminaire with emergency lighting module)

**EM-1/3** - non-maintained emergency lighting (usually only comes on for a specific duration when the power supply to normal artificial lighting fails)

**2.7K-6.5K** - colour temperature

**1/3 F** - single-phase or three phase through wiring connection, maximum diameter of wires 1.5 mm<sup>2</sup>

**NEREZ** – (in case of STAINLESS STEEL version its declared for ambient temperature decreased about 5-10°C)

Standard order number	MULTI-1H	MULTI-3H	DALI	1F	3F	EM-1H	EM-3H
080000	080028	080036	080011	080000 1F 2,5 MM2	080000 3F 2,5 MM2	X	X
080001	080029	080037	080012	080001 1F 2,5 MM2	080001 3F 2,5 MM2	80022	80025
080002	X	X	080013	080002 1F 2,5 MM2	080002 3F 2,5 MM2	X	X
080003	080030	080038	080014	080003 1F 2,5 MM2	080003 3F 2,5 MM2	X	X
080004	080031	080039	080015	080004 1F 2,5 MM2	080004 3F 2,5 MM2	80023	80026
080005	080032	080040	080016	080005 1F 2,5 MM2	080005 3F 2,5 MM2	X	X
080006	080033	080041	080017	080006 1F 2,5 MM2	080006 3F 2,5 MM2	X	X
080007	080034	080042	080018	080007 1F 2,5 MM2	080007 3F 2,5 MM2	80024	80027
080008	080035	080043	080019	080008 1F 2,5 MM2	080008 3F 2,5 MM2	X	X
080009	X	X	080020	080009 1F 2,5 MM2	080009 3F 2,5 MM2	X	X
080010	X	X	080021	080010 1F 2,5 MM2	080010 3F 2,5 MM2	X	X

### Use of lighting fixtures in areas with danger of explosion

Danger of explosion of flammable dust	BE3N1
Danger of explosion of flammable gases and vapours	BE3N2

### Marking of external influences

BE3N1	ZONE 22
BE3N2	ZONE 2

### Area classification

Marking	Directive
ZONE 22	ČSN EN 60079-14, ČSN EN 60079-10-2
ZONE 2	ČSN EN 60079-14, ČSN EN 60079-10-1